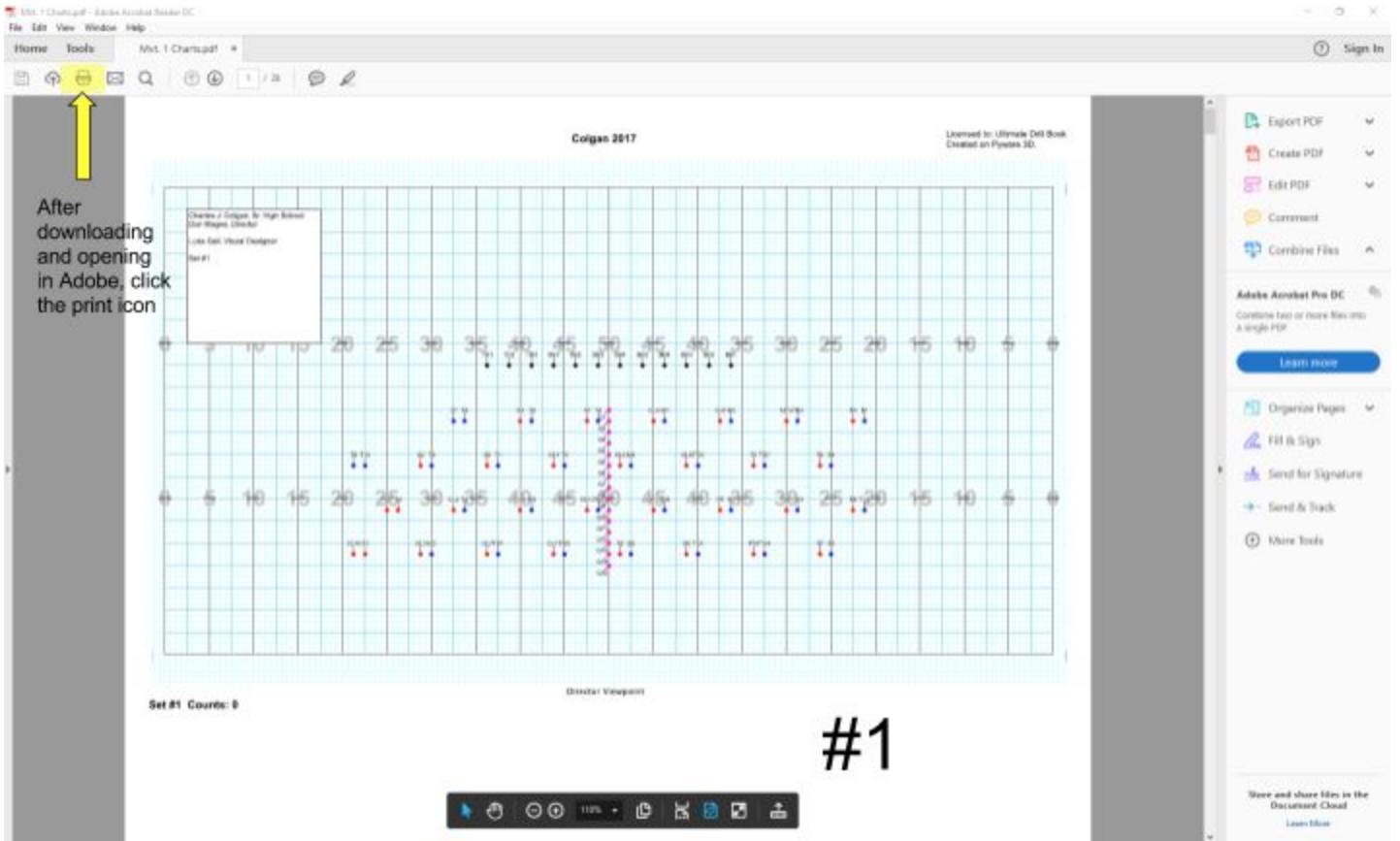


Open PDF from email on a Windows computer-will not work on a phone



Printer: HP405A83 (HP Officejet Pro 8600) (Copy 1)

Properties

Advanced

Help

Copies: 1



- Print in grayscale (black and white)
- Save ink/toner

Pages to Print

- All
- Current page
- Pages: 1 - 28
- More Options

Make sure to change to your printer name, it will automatically say "Microsoft Print to PDF"

Page Sizing & Handling

Size Poster **Multiple** Booklet



- Fit
- Actual size
- Shrink oversized pages
- Custom Scale: 100 %
- Choose paper source by PDF page size
- Print on both sides of paper

Select multiple to change the number of images per page

- Orientation:
- Auto portrait/landscape
 - Portrait
 - Landscape

#2

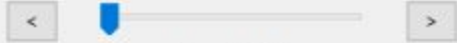
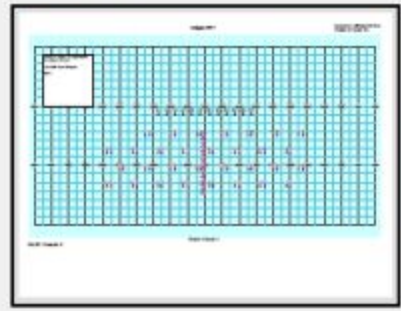
Comments & Forms

Document and Markups

Summarize Comments

Scale: 97%

11 x 8.5 Inches

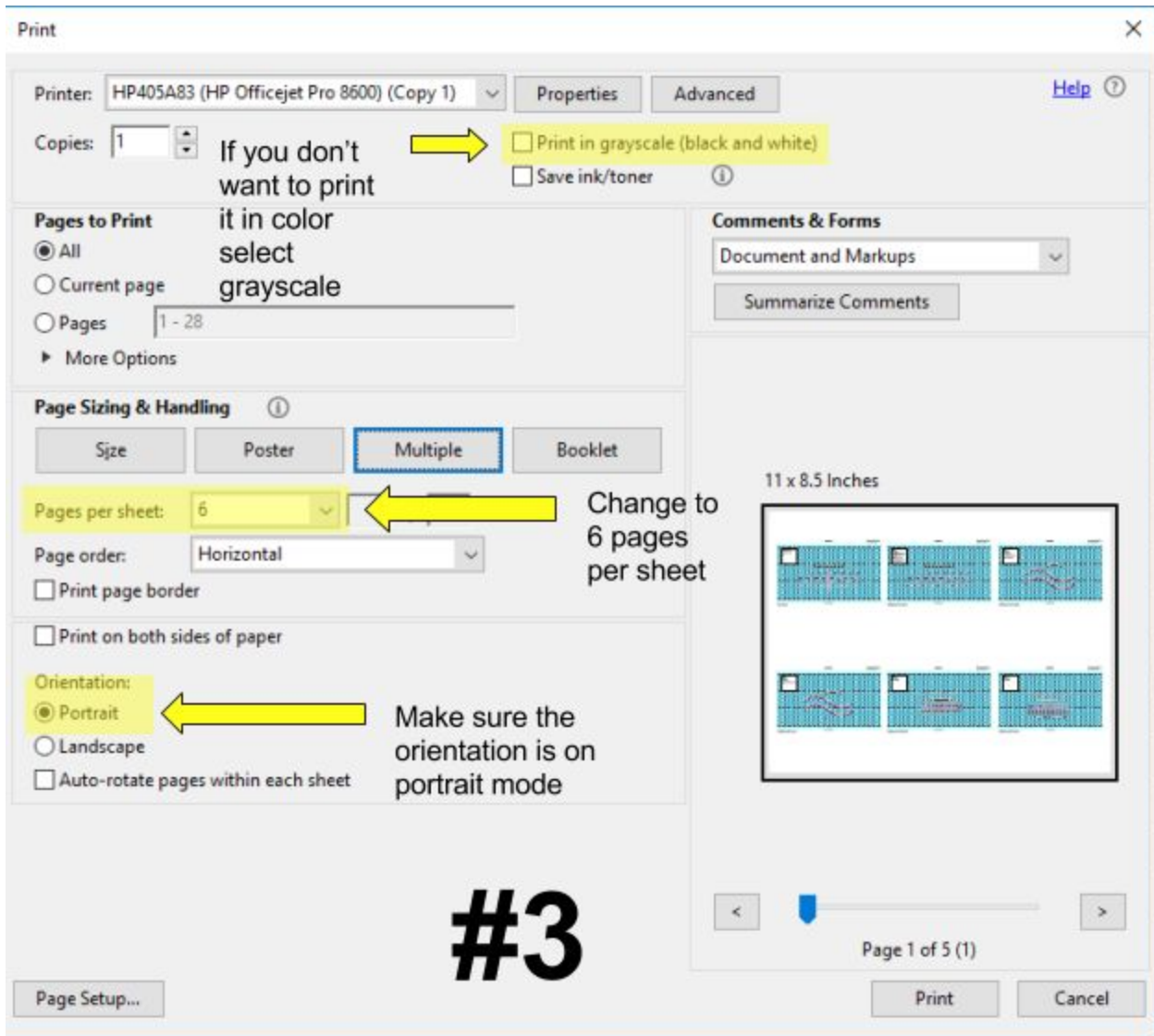


Page 1 of 28

Page Setup...

Print

Cancel



- Your pictures will print out really small-this is OK! The purpose of the pictures is to have a reference of what the shape is supposed to look like.
- You DO NOT have to print the pages in color if you do not want to!!!